



# Test Report

No.: GZHG1212035447DC Date: Dec. 12, 2012

Page 1 of 4

MINHON GIFTS & PREMIUMS CO., LTD  
HONGXING ROAD, CAOER INDUSTRIAL ZONE, GUZHEN, ZHONGSHAN CITY, CHINA

The following sample(s) was/were submitted and identified on behalf of the applicant as

Sample Description : PU MATERIAL  
 SGS Ref No. : CAN12-166091  
 Style / Item No. : L60034  
 P.O. / Ref. No. : 4500025675  
 Buyer : BERENDSOHN AG  
 Supplier : MINHON GIFTS & PREMIUMS CO., LTD  
 Country of Destination : GERMANY  
 Sample Receiving Date : Dec. 04, 2012  
 Testing Period : Dec. 05, 2012 To Dec. 12, 2012

Test Requested	Result
To determine Migration of Certain Elements in the selected parts on the submitted sample(s) with reference to EN71 Part 3 : 1994 (including amendment A1:2000/AC:2002).	PASS
To determine Phthalates(DBP, BBP, DEHP, DINP, DNOP, DIDP) in the submitted sample(s) with reference to the Entry 51/52 of Regulation (EC) No. 552/2009 amending Annex XVII of REACH Regulation (EC) No. 1907/2006 (previously restricted under Directive 2005/84/EC).	PASS
Determination of Organostannic compounds(TBT, TPhT, TCyT, TOT, DOT, DBT) contents in the submitted sample(s) with reference to the Entry 20 of Regulation (EU) No. 276/2010 amending Annex XVII of REACH Regulation (EC) No. 1907/2006 (previously restricted under Directive 2009/425/EC).	PASS
Determination of Cadmium(Cd) content in the submitted sample(s) with reference to Commission Regulation (EU) No. 494/2011 amending Annex XVII of REACH Regulation (EC) No. 1907/2006 (previously restricted under entry 23 of Regulation (EC) No. 552/2009 and Directive 91/338/EEC).	PASS

Signed for and on behalf of  
SGS-CSTC Ltd.

Yan Lau  
Approved signatory

This document is issued by the Company subject to its General Conditions of Service printed overleaf, available on request or accessible at [http://www.sgs.com/terms\\_and\\_conditions.htm](http://www.sgs.com/terms_and_conditions.htm) and for electronic format documents, subject to Terms and Conditions for Electronic Documents at [www.sgs.com/terms\\_e-document.htm](http://www.sgs.com/terms_e-document.htm). Attention is drawn to the limitation of liability, indemnification and jurisdiction issues defined therein. Any holder of this document is advised that information contained hereon reflects the Company's findings at the time of its inspection and is given within the limits of Client's instructions, if any. The Company's sole responsibility is to its Client and this document does not exonerate parties to a transaction from exercising all their rights and obligations under the transaction documents. This document cannot be reproduced except in full, without prior written approval of the Company. Any unauthorized alteration, forgery or falsification of the content or appearance of this document is unlawful and offenders may be prosecuted to the fullest extent of the law. Unless otherwise stated, the results shown in this test report refer only to the sample(s) tested and such sample(s) are retained for 30 days only.



SGS (Shanghai) Services Co., Ltd.  
Guangzhou Branch

198 Kexu Road Science Park Guangzhou Economic & Technology Development District, Guangzhou, China 510663 t (86-20) 82155555 f (86-20) 82075191 www.cn.sgs.com  
中国·广州·经济技术开发区科学城科珠路198号 邮编: 510663 t (86-20) 82155555 f (86-20) 82075191 e sgs.china@sgs.com

Member of the SGS Group (SGS SA)

Test Results :

Test Part Description :

Specimen No.	SGS Sample ID	Description
1	CAN12-166091.001	Brown synthetic leather w/ gray backing(semi-product)

Remarks :

- (1) 1 mg/kg = 0.0001%
- (2) MDL = Method Detection Limit
- (3) ND = Not Detected ( < MDL )
- (4) "-" = Not Regulated

**EN 71 Part3:1994 (including amendment A1:2000/AC:2002) - Migration of Certain Elements**

Test Method : With reference to EN 71 Part 3:1994 + A1:2000 + AC: 2002, analysis was performed by ICP-OES

<u>Test Item(s)</u>	<u>Limit</u>	<u>Unit</u>	<u>MDL</u>	<u>001</u>
Soluble Lead (Pb)	90	mg/kg	5	ND
Soluble Antimony (Sb)	60	mg/kg	5	ND
Soluble Arsenic (As)	25	mg/kg	2.5	ND
Soluble Barium (Ba)	1000	mg/kg	10	ND
Soluble Cadmium (Cd)	75	mg/kg	5	ND
Soluble Chromium (Cr)	60	mg/kg	5	ND
Soluble Mercury (Hg)	60	mg/kg	5	ND
Soluble Selenium (Se)	500	mg/kg	10	ND

Notes :

- (1) Results shown are of the adjusted analytical results.

**Entry 51 & 52 of Regulation (EC) No 552/2009 amending Annex XVII of REACH Regulation (EC) No 1907/2006 (previously restricted under Directive 2005/84/EC)**

Test Method : With reference to EN 14372: 2004, analysis was performed by GC-MS.

<u>Test Item(s)</u>	<u>Limit</u>	<u>Unit</u>	<u>MDL</u>	<u>001</u>
Dibutyl Phthalate (DBP)	-	% (w/w)	0.003	ND
Benzylbutyl Phthalate (BBP)	-	% (w/w)	0.003	ND
Bis-(2-ethylhexyl) Phthalate (DEHP)	-	% (w/w)	0.003	ND
Total (DBP+BBP+DEHP)	0.1	% (w/w)	-	ND

This document is issued by the Company subject to its General Conditions of Service printed overleaf, available on request or accessible at [http://www.sgs.com/terms\\_and\\_conditions.htm](http://www.sgs.com/terms_and_conditions.htm) and for electronic format documents, subject to Terms and Conditions for Electronic Documents at [www.sgs.com/terms\\_e-document.htm](http://www.sgs.com/terms_e-document.htm). Attention is drawn to the limitation of liability, indemnification and jurisdiction issues defined therein. Any holder of this document is advised that information contained hereon reflects the Company's findings at the time of its issue and is subject to change within the limits of Client's instructions, if any. The Company's sole responsibility is to its Client and this document does not exonerate parties to a transaction from exercising all their rights and obligations under the transaction documents. This document cannot be reproduced except in full, without prior written approval of the Company. Any unauthorized alteration, forgery or falsification of the content or appearance of this document is unlawful and offenders may be prosecuted to the fullest extent of the law. Unless otherwise stated, the results shown in this test report refer only to the sample(s) tested and such sample(s) are retained for 30 days only.





## Test Report

No.: GZHG1212035447DC

Date: Dec. 12, 2012

Page 3 of 4

Diisononyl Phthalate (DINP)	-	% (w/w)	0.010	ND
Di-n-octyl Phthalate (DNOP)	-	% (w/w)	0.003	ND
Diisodecyl Phthalate (DIDP)	-	% (w/w)	0.010	ND
Total (DINP+DNOP+DIDP)	0.1	% (w/w)	-	ND

### Notes :

European Parliament adopted new phthalate Entry 51 & 52 of Regulation (EC) No 552/2009 amending Annex XVII of REACH Regulation (EC) No 1907/2006 (previously restricted under Directive 2005/84/EC);

(1-1) DBP, BBP and DEHP are totally banned for use in any toys on childcare articles where their concentration exceeds 0.1% by mass.

(1-2) DINP, DNOP, DIDP are totally banned for use in toys and childcare articles that can be mouthed where their concentration exceeds 0.1% by mass.

### Organic-tin compounds

Test Method : With reference to ISO 17353: 2004 with carbamate, analysis was performed by GC-MS.

<u>Test Item(s)</u>	<u>Limit</u>	<u>Unit</u>	<u>MDL</u>	<u>001</u>
Tributyl tin (TBT) by weight of Tin	-	% (w/w)	0.01	ND
Triphenyl tin (TPhT) by weight of Tin	-	% (w/w)	0.01	ND
Tricyclohexyltin (TCyT) by weight of Tin	-	% (w/w)	0.01	ND
Trioctyltin (TOT) by weight of Tin	-	% (w/w)	0.01	ND
Sum of TBT,TPhT,TCyT,TOT by weight of Tin	0.1	% (w/w)	-	ND
Diocetyl tin (DOT) by weight of Tin	0.1	% (w/w)	0.01	ND
Dibutyl tin (DBT) by weight of Tin	0.1	% (w/w)	0.01	ND

### Commission Regulation (EU) No 494/2011 amending Annex XVII of REACH Regulation (EC) No 1907/2006 (previously restricted under entry 23 of Regulation (EC) No 552/2009 amending Annex XVII of REACH Regulation (EC) No 1907/2006)-Cadmium (Cd)

Test Method : With reference to US EPA Method 3052:1996. Analysis was performed by ICP-OES.

<u>Test Item(s)</u>	<u>Limit</u>	<u>Unit</u>	<u>MDL</u>	<u>001</u>
Cadmium (Cd)	100	mg/kg	5	ND

### Conclusion

PASS

This document is issued by the Company subject to its General Conditions of Service printed overleaf, available on request or accessible at [http://www.sgs.com/terms\\_and\\_conditions.htm](http://www.sgs.com/terms_and_conditions.htm) and for electronic format documents, subject to Terms and Conditions for Electronic Documents at [www.sgs.com/terms\\_e-document.htm](http://www.sgs.com/terms_e-document.htm). Attention is drawn to the limitation of liability, in arbitration and jurisdiction issues defined therein. Any holder of this document is advised that information contained hereon reflects the Company's findings at the time of its inspection only and within the limits of Client's instructions, if any. The Company's sole responsibility is to its Client and this document does not exonerate parties to a transaction from exercising all their rights and obligations under the transaction documents. This document cannot be reproduced except in full, without prior written approval of the Company. Any unauthorized alteration, forgery or falsification of the content or appearance of this document is unlawful and offenders may be prosecuted to the fullest extent of the law. Unless otherwise stated, the results shown in this test report refer only to the sample(s) tested and such sample(s) are retained for 30 days only.



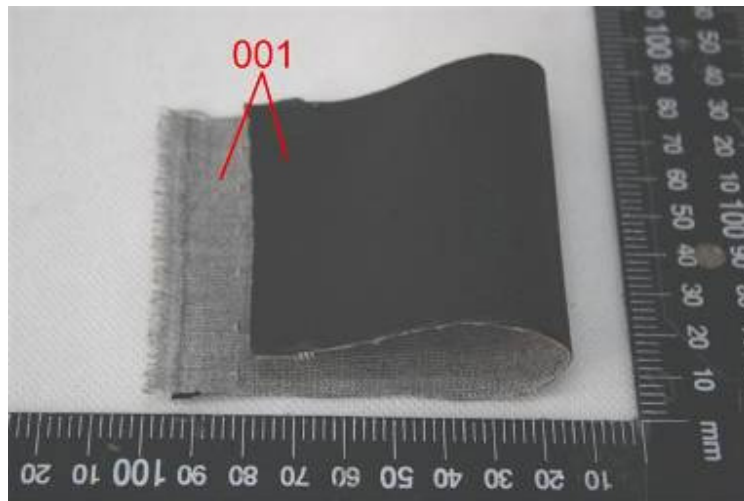
198 Kailu Road Science Park Guangzhou Economic & Technology Development District, Guangzhou, China 510663 t (86-20) 82155555 f (86-20) 82075191 www.cn.sgs.com  
中国·广州·经济技术开发区科学城科珠路198号 邮编: 510663 t (86-20) 82155555 f (86-20) 82075191 e sgs.china@sgs.com

Member of the SGS Group (SGS SA)

Sample photo:



Product Photo



\*\*\* End of Report \*\*\*

This document is issued by the Company subject to its General Conditions of Service printed overleaf, available on request or accessible at [http://www.sgs.com/terms\\_and\\_conditions.htm](http://www.sgs.com/terms_and_conditions.htm) and for electronic format documents, subject to Terms and Conditions for Electronic Documents at [www.sgs.com/terms\\_e-document.htm](http://www.sgs.com/terms_e-document.htm). Attention is drawn to the limitation of liability, in arbitration and jurisdiction issues defined therein. Any holder of this document is advised that information contained hereon reflects the Company's findings at the time of its inspection only and is not intended to be used for any other purpose within the limits of Client's instructions, if any. The Company's sole responsibility is to its Client and this document does not exonerate parties to a transaction from exercising all their rights and obligations under the transaction documents. This document cannot be reproduced except in full, without prior written approval of the Company. Any unauthorized alteration, forgery or falsification of the content or appearance of this document is unlawful and offenders may be prosecuted to the fullest extent of the law. Unless otherwise stated, the results shown in this test report refer only to the sample(s) tested and such sample(s) are retained for 30 days only.

